

## The GfÖ-Specialist Group Landscape Ecology

was founded during the 34<sup>th</sup> Annual Conference of the Ecological Society GfÖ in Giessen. Although this group is going to be one of the Specialists Groups organised within the Ecological Society of Germany, Austria and Switzerland it is open for GfÖ-members and non-members alike, no matter from where they are.

The founding members discussed their ideas on the objectives of this new group in a first meeting. In a first exchange of views it became obvious that in European Landscape Ecology there is a need for a platform that promotes discussions and cooperation of landscape ecologists in general. Besides pure natural-scientific approaches, integrative analyses based on, e.g., Natural Science and Social Science are of particular interest. Other topics of interest are, e.g., spatio-temporal scaling issues in modelling and applied science.

Please, note our website that provides further information and will be updated periodically:

**[www.gfoe.org/gfoe-specialist-groups/landscape-ecology](http://www.gfoe.org/gfoe-specialist-groups/landscape-ecology)**

## Contact

If you are interested to participate in the specialist group, or would like to receive further information, contact:

PD Dr. rer. nat. Rainer Waldhardt  
Division of Landscape Ecology and  
Landscape Planning  
Department of Landscape Ecology and  
Resources Management  
Justus-Liebig-University Giessen  
Heinrich-Buff-Ring 26-32  
D-35392 Giessen, Germany

Phone : +49 (0)641 9937163

Fax : +49 (0)641 9937169

Email : [rainer.waldhardt@umwelt.uni-giessen.de](mailto:rainer.waldhardt@umwelt.uni-giessen.de)

Homepage: [www.uni-giessen.de/waldhardt](http://www.uni-giessen.de/waldhardt)

---

Information leaflet  
Update: September 2008

issued by

Rainer Waldhardt  
Division of Landscape Ecology and  
Landscape Planning  
Justus-Liebig-University Giessen  
Heinrich-Buff-Ring 26-32  
D-35392 Giessen

Editors:

R. Waldhardt, D. Simmering

Photographs by:

R. Waldhardt

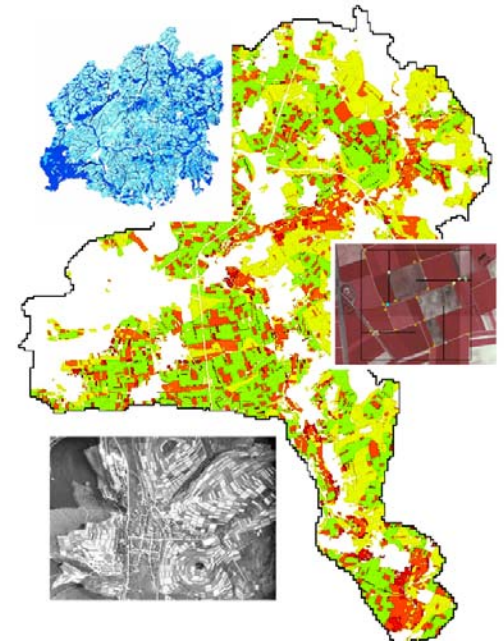
# GfÖ

Specialist Group

„Arbeitskreis“

## Landscape Ecology

### Information Leaflet



## Landscape Ecology

has a long tradition in German-speaking countries which goes back to the first half of the 20<sup>th</sup> century. Being a key subject mainly for geographers, the methods of this traditional approach became widely applied in landscape planning and other disciplines that deal with landscape analysis. However, in the early 80's Landscape Ecology was 'reinvented' in the English-speaking world and has developed to be one of the key issues in modern day ecology. Since then, great advances have been made in the development of new theoretical and methodological approaches. The aim of the GfÖ-Specialist Group Landscape Ecology is to bring together the various concepts of Landscape Ecology and to promote a deeper understanding of landscape ecological issues.

**Landscape Functions**  
**Ecosystem Processes**  
**Landscape as Cultural Heritage**  
**Natural and Cultural Landscapes**  
**Landscape Heterogeneity**  
**Up- and Downscaling**  
**Remote Sensing**   **Landscape Models**  
**Concept of Scale**   **Landscape Scenarios**  
**Disturbance and Dynamics**  
**Landscape Conservation**  
**Applied Landscape Ecology**   **Land Cover**  
**Landscape Indices**  
**Landscape Biodiversity**  
**Landscape Structure**   **Pattern**  
**Landscape Management**

## Workshops and Symposia

### Driving forces of species diversity at the landscape scale

GfOE Annual Conference 2005 in Regensburg - Symposium on Landscape Ecology

Chairs: Hans Jürgen Böhmer (University of Bonn) and Rainer Waldhardt (Justus-Liebig-University Giessen)

### Landscape changes and biodiversity: Landscape ecological research towards sustainable land use in Europe

International Workshop 2006 at Giessen University

Organisers: Hans Jürgen Böhmer (Vegetation Geography, Univ. Bonn); Jens Dauber (Animal Ecology, Univ. Giessen); Dorothea Kampmann (Nature and Landscape, Swiss Federal Research Station for Agroecology and Agriculture, Zurich); Dietmar Simmering (Landscape Ecology and Landscape Planning, Univ. Giessen); Helene Wagner (Landscape, WSL Swiss Federal Research Institute, Birmensdorf); Rainer Waldhardt (Landscape Ecology and Landscape Planning, Univ. Giessen)

### Landscape changes: Modelling future biodiversity at the landscape scale

GfOE Annual Conference 2006 in Bremen - Symposium 'Modelling' on Landscape Ecology and Ecological Theory

Chairs: Dorothea Kampmann (Agroscope, Zürich-Reckenholz) and Rainer Waldhardt (Justus-Liebig-University Giessen)

### Landscape changes and biodiversity: Landscape ecological research towards sustainable land use in Europe

GfOE Annual Conference 2007 in Marburg - Symposium on Landscape Ecology

Chair: Rainer Waldhardt, Justus-Liebig-University Giessen

### Energy plant production - ecological effects on the landscape

Workshop 2008 at Giessen University

Organiser: Rainer Waldhardt, Justus-Liebig-University Giessen

### Landscape ecological research on energy plant production in the context of ecosystem services

Symposium as part of the Annual Conference 2008 of IALE-D

Chairs: Felix Müller (Univ. Kiel) and Rainer Waldhardt, Justus-Liebig-University Giessen

**You are invited to join us!**