

Landscape Ecology

ABOUT LANDSCAPE ECOLOGY

Landscape Ecology has a long tradition in German-speaking countries, which goes back to the first half of the 20th century. Being a key subject mainly for geographers, the methods of this traditional approach became widely applied in landscape planning and other disciplines that deal with landscape analysis.

However, in the early 80's Landscape Ecology was 'reinvented' in the English-speaking world and has developed to be one of the key issues in modern day ecology. Since then, great advances have been made in the development of theoretical and methodological approaches.

The GfÖ Specialist Group Landscape Ecology was funded in 2004. Our aim is to bring together the various concepts of Landscape Ecology and to promote a deeper understanding of landscape ecological issues.

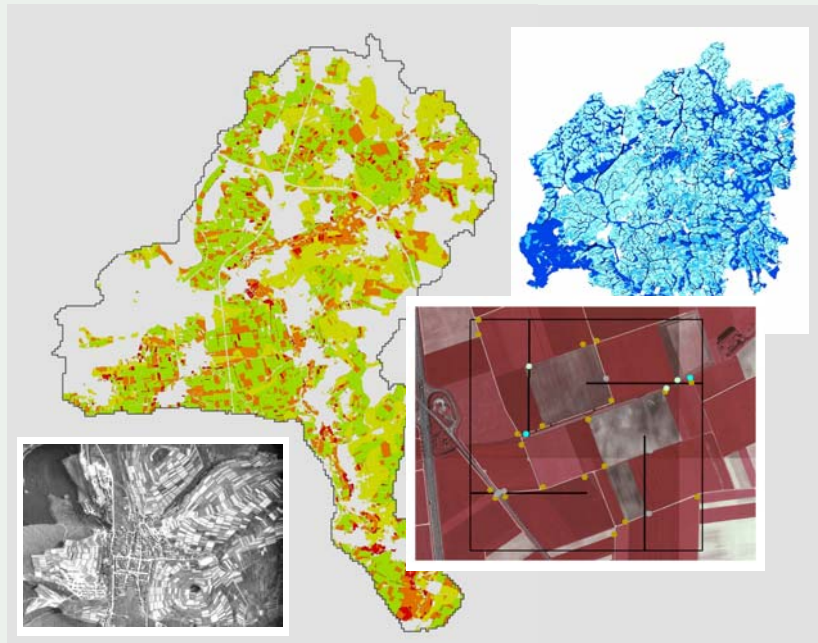
MEMBERS

- √ About 50 members
- √ Biogeographers, Biologists, Geographers, Landscape Ecologists, Landscape Planners, Nature Conservationists, and others

FUTURE ACTIVITIES

- √ Further Symposia and Workshops on basic and applied topics

Gesellschaft für Ökologie Ecological Society of Germany, Austria and Switzerland



RECENT ACTIVITIES

- √ GfÖ Annual Conference 2005, Symposium
Driving Forces of Species Diversity at the Landscape Scale
- √ Workshop 2006
Landscape Changes and Biodiversity: Landscape Ecological Research towards Sustainable Land Use in Europe
- √ GfÖ Annual Conference 2006, Symposium
Landscape Changes: Modelling Future Biodiversity at the Landscape Scale
- √ GfÖ Annual Conference 2007, Symposium
Landscape structure and species dispersal
- √ Workshop 2008
Energy Plant Production - Ecological Effects on the Landscape
- √ Scientific exchange with the International Association for Landscape Ecology (IALE)

<http://www.gfoe.org/gfoe-specialist-groups/landscape-ecology>